

**Watling Street, Radlett**

**Asking Price £315,000 (Leasehold)**



This stunning ground-floor apartment is perfectly positioned in the highly sought-after Radlett, offering stylish living with the convenience of your own private entrance directly from the street.

Immaculately maintained, the property features a welcoming entrance hall leading into a spacious 25-ft open-plan living, dining, and kitchen area complete with fully integrated appliances — ideal for modern living and entertaining. The generous double bedroom is complemented by a luxurious en-suite bathroom, offering both a bath and a separate shower. Additional practical features include two well-sized storage cupboards.

Further benefits include allocated off-street parking within a secure underground car park, providing peace of mind and convenience.

Ideally located, the apartment is just a short stroll from Radlett's vibrant array of shops, restaurants, and local amenities. Excellent transport links are available via Radlett railway station, with direct services to King's Cross St Pancras and central London in under 25 minutes.

**01923 852434**  
[www.village-estates.co.uk](http://www.village-estates.co.uk)



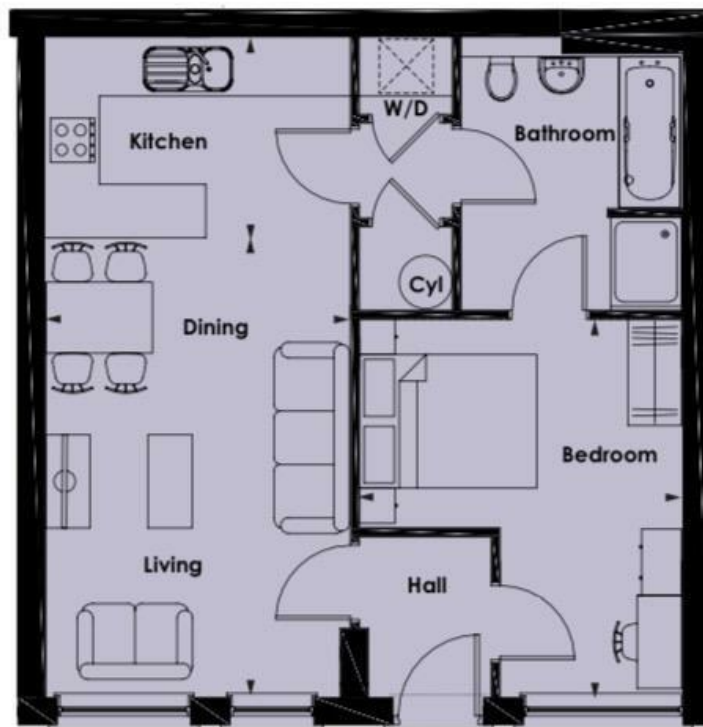
Village Estates  
70d Watling Street, Radlett  
Herts WD7 7NP

Important Note: These particulars do not form part of any contract. All measurements are approximate and should not be relied upon. All prices quoted are strictly subject to contract.





## APARTMENT 2



**Living/Dining**  
5154mm x 3461mm  
16'10" x 11'4"

**Kitchen**  
3461mm x 2255mm  
11'4" x 7'4"

**Bedroom (max)**  
4119mm x 3629mm  
13'6" x 11'10"

55.2 sq.m.  
594 sq.ft.  
(Dimensions to arrows)



Available on the  
**App Store**



ANDROID APP ON  
**Google play**

Energy Efficiency Rating		
	Current	Potential
<i>Very energy efficient - lower running costs</i>		
(92 plus) <b>A</b>		
(81-91) <b>B</b>		
(69-80) <b>C</b>		
(55-68) <b>D</b>		
(39-54) <b>E</b>		
(21-38) <b>F</b>		
(1-20) <b>G</b>		
<i>Not energy efficient - higher running costs</i>		
<b>England &amp; Wales</b>	EU Directive 2002/91/EC 